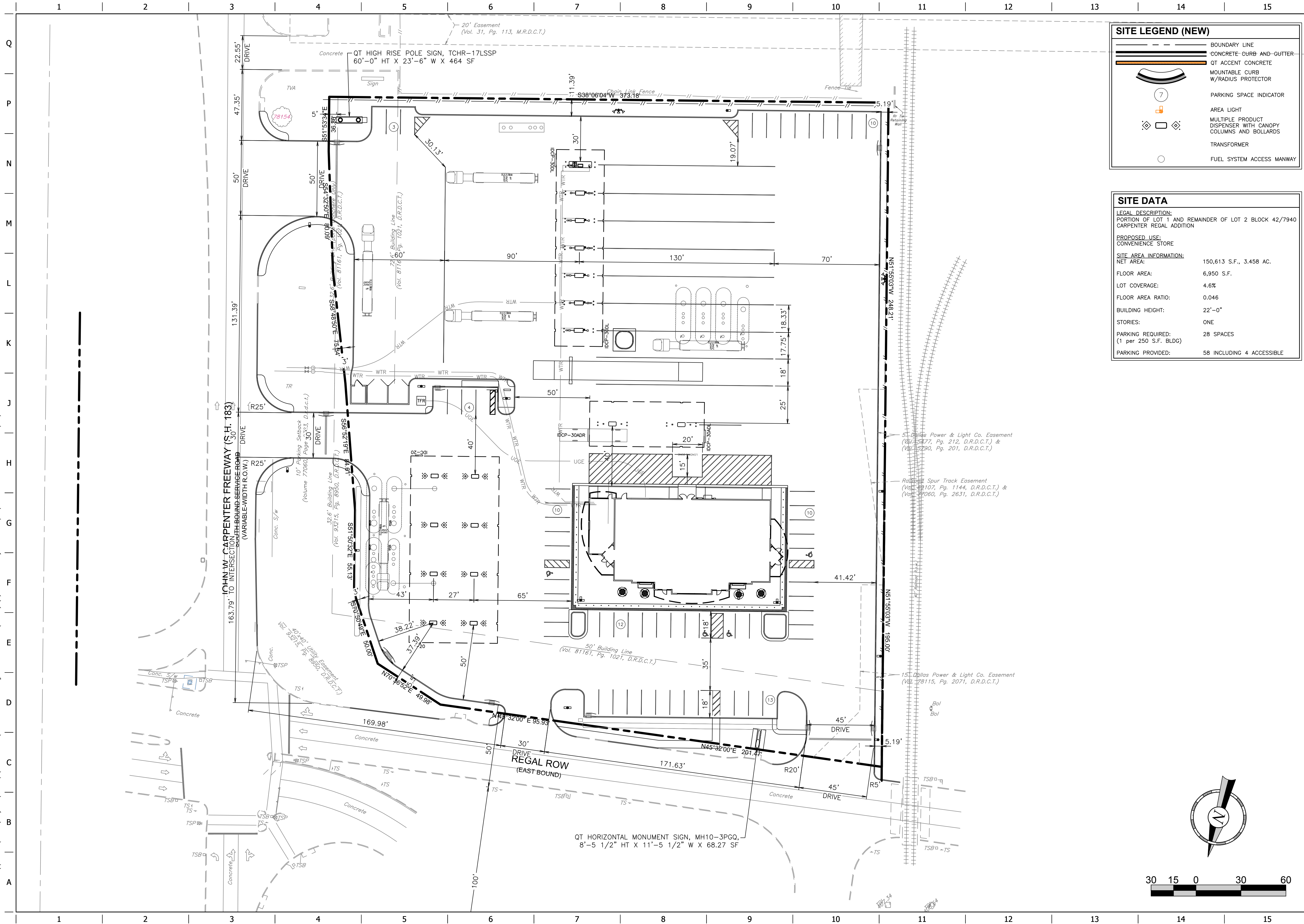


FILE LOCATION: \\K-K-HR-Public\Projects\QuikTrip\1935 Dallas\08-1935TC Civil.dwg TAB NAME: Site (Prelim) (2) USER: Cherilyn SAVED: 7/19/2016 10:12 AM PLOTTED: 7/19/2016 10:14 AM



**SITE LEGEND (NEW)**

- BOUNDARY LINE
- CONCRETE CURB AND GUTTER
- QT ACCENT CONCRETE
- MOUNTABLE CURB W/RADIUS PROTECTOR
- PARKING SPACE INDICATOR
- AREA LIGHT
- MULTIPLE PRODUCT DISPENSER WITH CANOPY COLUMNS AND BOLLARDS
- TRANSFORMER
- FUEL SYSTEM ACCESS MANWAY

**SITE DATA**

**LEGAL DESCRIPTION:**  
 PORTION OF LOT 1 AND REMAINDER OF LOT 2 BLOCK 42/7940 CARPENTER REGAL ADDITION

**PROPOSED USE:**  
 CONVENIENCE STORE

**SITE AREA INFORMATION:**

NET AREA:	150,613 S.F., 3.458 AC.
FLOOR AREA:	6,950 S.F.
LOT COVERAGE:	4.6%
FLOOR AREA RATIO:	0.046
BUILDING HEIGHT:	22'-0"
STORIES:	ONE
PARKING REQUIRED: (1 per 250 S.F. BLDG)	28 SPACES
PARKING PROVIDED:	58 INCLUDING 4 ACCESSIBLE

**Cheryl Armijo**  
 CHERALYN ARMIJIO  
 84568  
 The seal appearing on this document was authorized by Cheryl Armijo, P.E., 84568, on July 19, 2016.

PROJECT NO.: 15-663.1863

**GLENN ENGINEERING**  
 PHONE: (972) 717-5151  
 105 DECKER COURT, SUITE 910  
 IRVING, TEXAS 75032  
 TEXAS REGISTRATION NUMBER: F-303

**QuikTrip No. 1935TC**

S.E.C. OF REGAL ROW & HWY. 183  
 DALLAS, TX.

**QT**

© COPYRIGHT QUIKTRIP CORPORATION 2011  
 ANY UNAUTHORIZED USE, REPRODUCTION, PUBLICATION, DISTRIBUTION, OR SALE IN WHOLE OR IN PART, IS STRICTLY FORBIDDEN.

PROTOTYPE: P-85 (11/01/15)  
 DIVISION: 08  
 VERSION: 001  
 DESIGNED BY: CMA  
 DRAWN BY: KKE  
 REVIEWED BY: POTTER

REV	DATE	DESCRIPTION

SHEET TITLE:  
 PRELIMINARY SITE PLAN

SHEET NUMBER:  
 3

ORIGINAL ISSUE DATE: 08/11/15